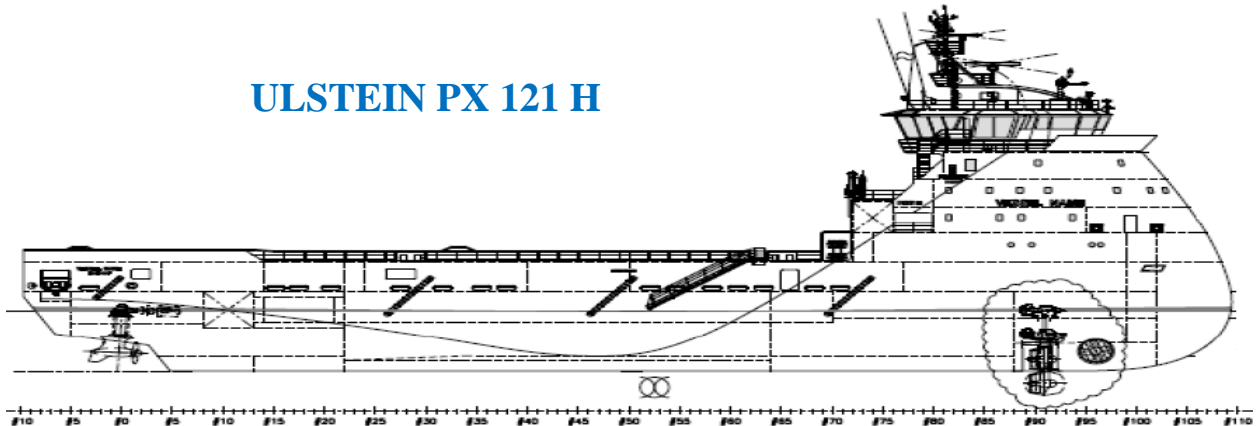




JANTLE MARINE

www.jantlemarine.com

ULSTEIN PX 121 H



General Description

The ship is able to fulfill general demands of the offshore industry worldwide for transportation of cement, liquids mud, base oil, brine, fuel oil, fresh water, recovered oil, low flashpoint liquids and dry bulk cargo. The ship is to be propelled by two diesel electric driven azimuth thrusters. Power supply is by four resilient mounted diesel generator sets. Bridge consoles to be arranged according to NAUT-OSV(A) requirements. The vessel is equipped with a DP2 system.

Principal Particulars

Length overall	: 83.40 M
Length BP	: 76.50 M
Beam moulded	: 18.0 M
Depth moulded	: 8.0 M
Draft designed	: 6.0 M
Draft Scantling	: 6.7 M
Complement	: 30 men
Deadweight	: 3100 t

Capacity

Fresh water (Cargo)	: 1055 M3
Fuel oil (Cargo)	: 1475 M3
Base oil	: 255 M3
Drill/ ballast Water	: 1620 M3
Dry bulk cargo	: 255 M3
Mud/ Brine/Rec.oil	: 1295 M3
Recovery oil	: 660 M3
Low flashpoint liquids	: 155 M3

Performance

Speed	: 14.5 knots, 100% propeller power, at design draft
Deck space	: about 840 m ³

Class Notation

DNV Offshore Service Vessel, SF, E0, DYNPOS-AUTR, Clean Design, NAUT-OSV(A), COMF-V(3), LFL*, Fire Fighter I, OIRREC, BIS, BWM-T

Registry:

Singapore

Main equipments

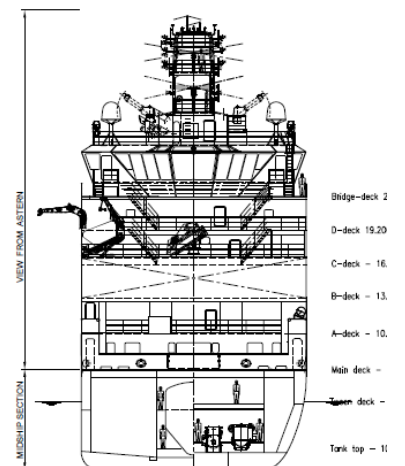
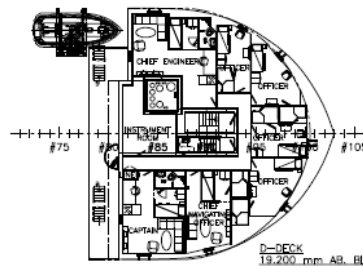
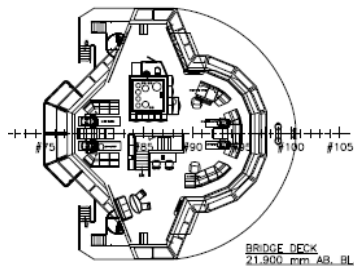
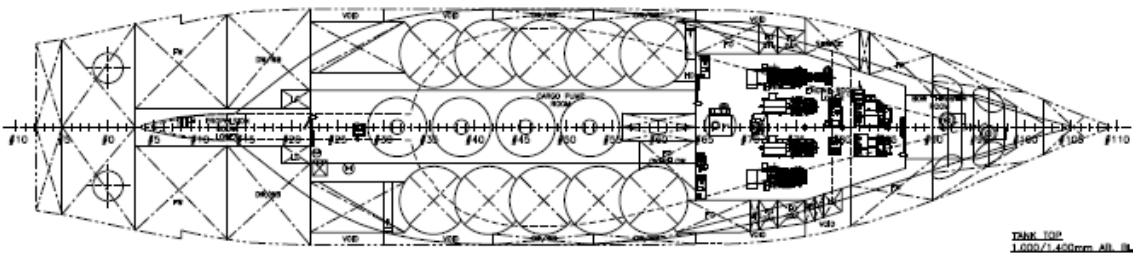
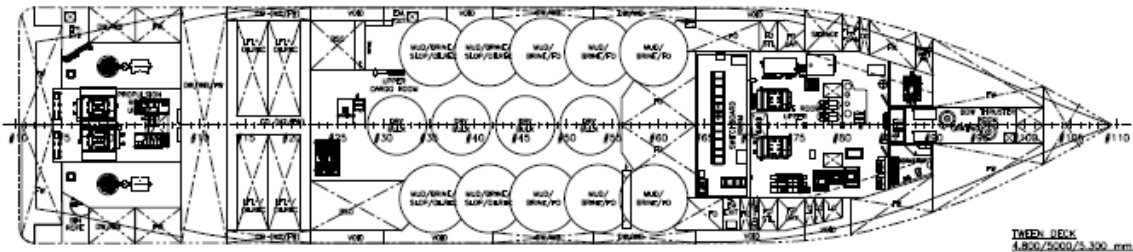
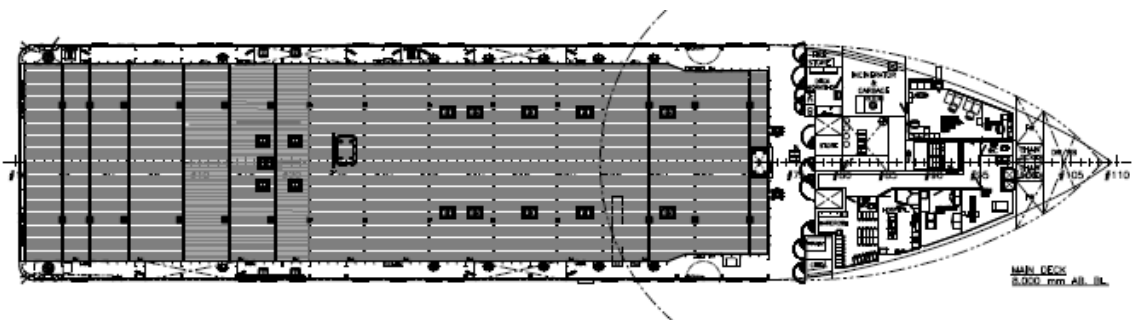
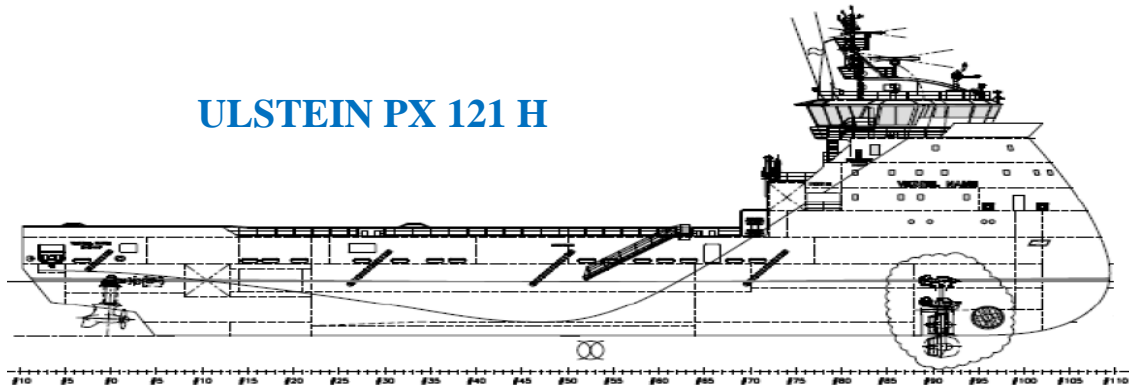
Main propulsion Thrusters	: 2 sets, Azimuth with CPP, 1600kW
Tunnel Thrusters	: 1 set, 880kW
Retra. azimuth Thrusters	: 1 set, 880kW
Main generator	: 4 sets, 1550kW×2, + 910kW×2
External Fi-Fi	: 1 set, Fire fighter I
DP2	: 1 set, with 2 DGPS & 1 Cyscan laser reference system



JANTLE MARINE

www.jantlemarine.com

ULSTEIN PX 121 H



ASTERN / MIDSHIP SECTION