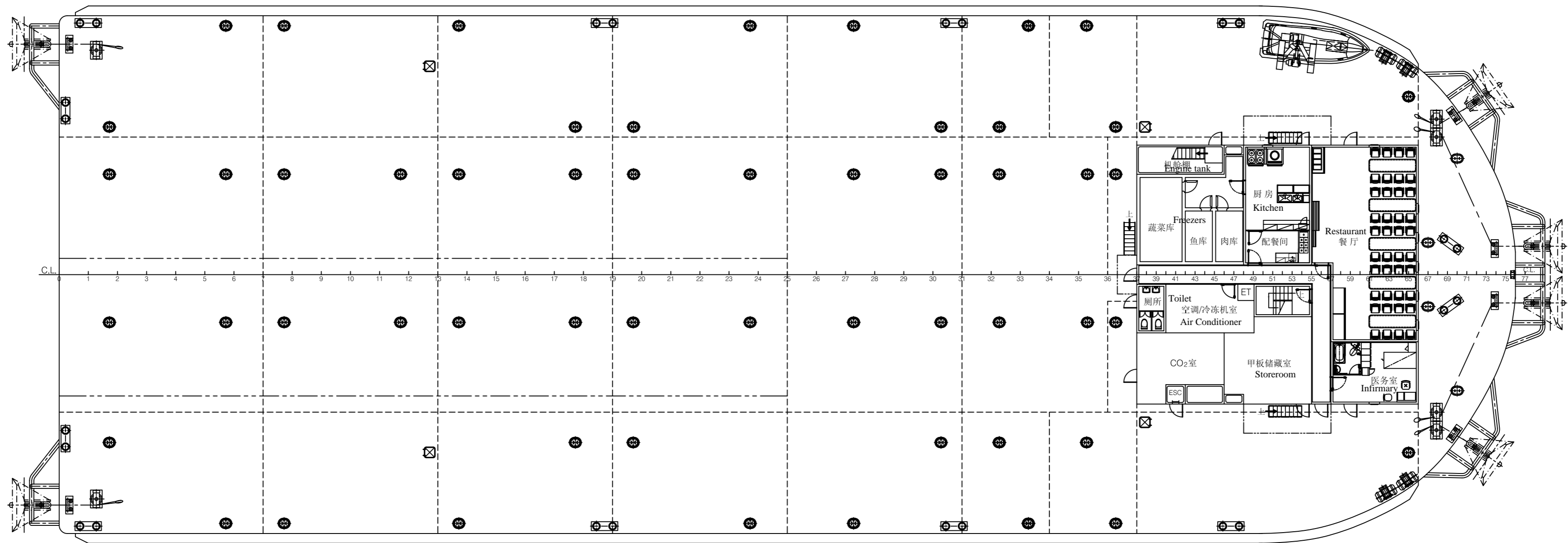
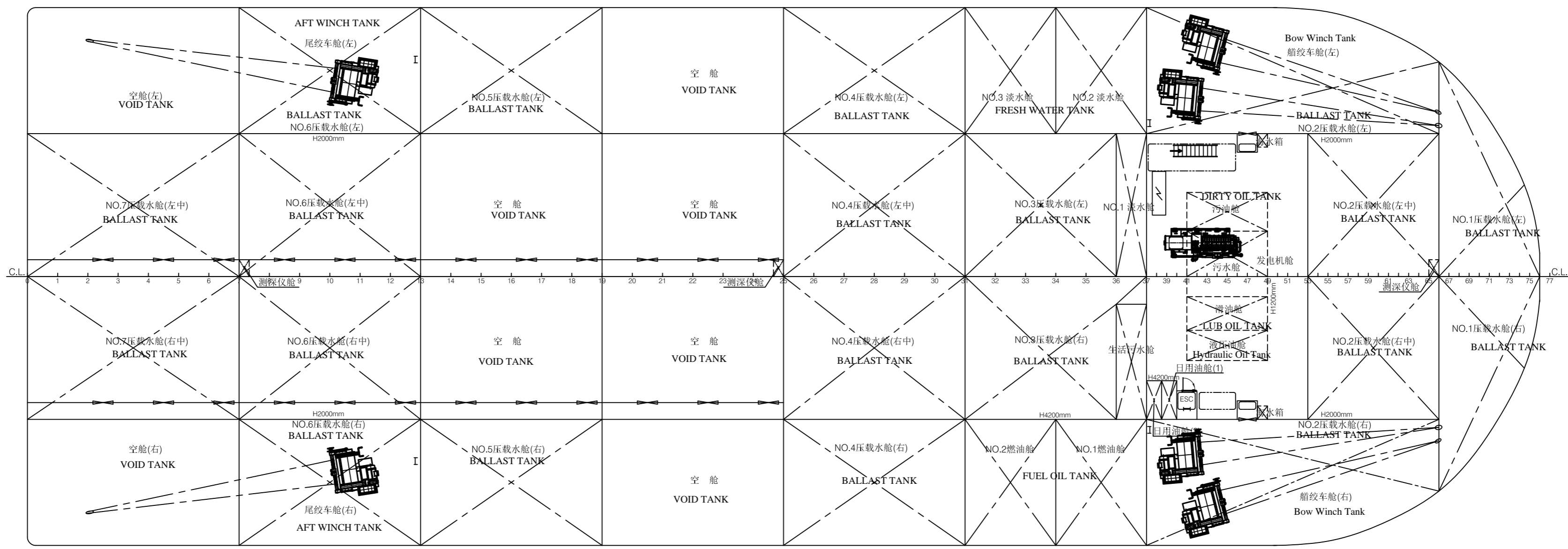


侧视图 SIDE VIEW

主甲板 MAIN DECK



主甲板下 UNDER MAIN DECK



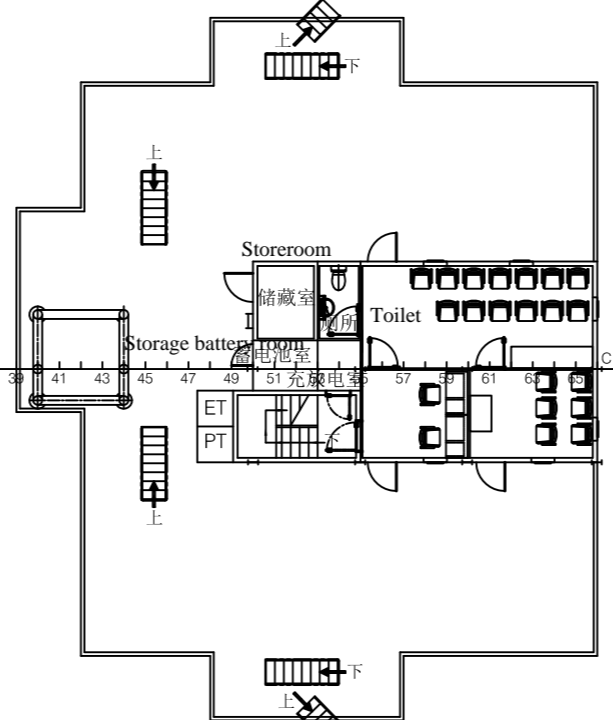
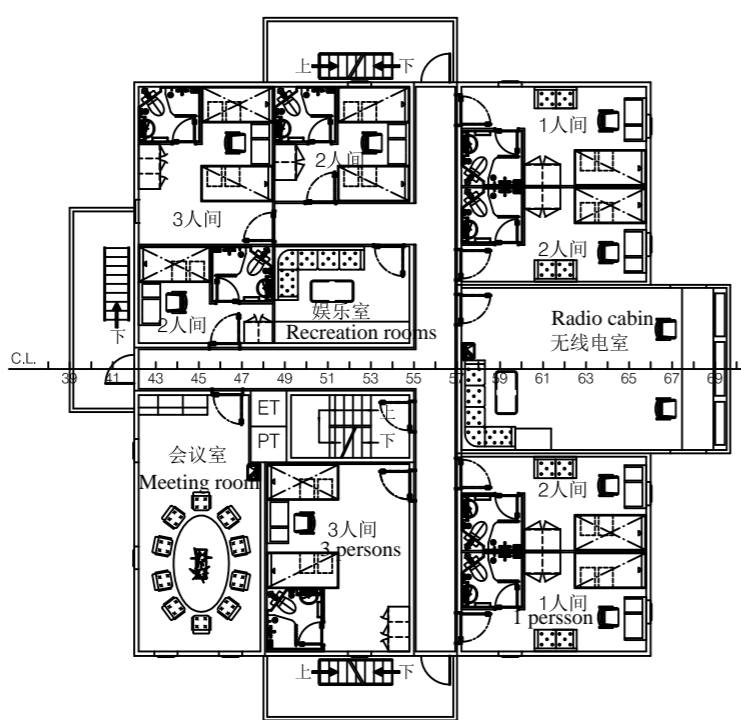
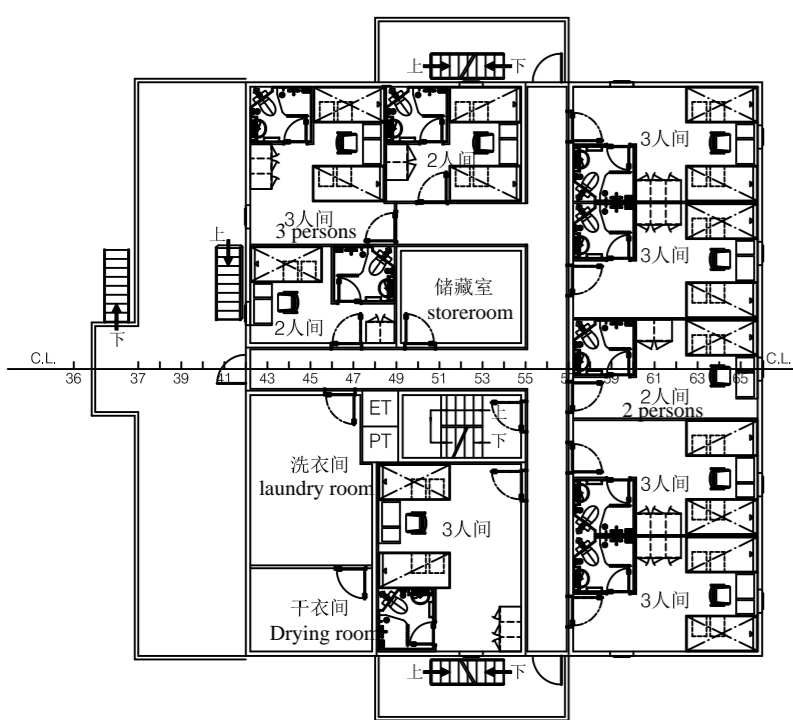
A甲板 (24人) DECK A

B甲板 (14人) DECK B

C甲板 DECK C

Cabins (24 persons)

Cabins (14 persons)



主要参数 MAIN PARTICULARS

Length overall	总长	90.00 m
Length between perpendiculars	设计水线长	89.30 m
Breadth Moulded	型宽	32.00 m
Depth Moulded	型深	5.00 m
Design Draft moulded	设计吃水	1.50 m
Scantling draft	结构吃水	3.50 m
Deck Weight	甲板载重	10 t/m ²
Area	航区	Unrestricted navigation area 无限航区
Crew	定员	38人
Class	船级	CCS
Classification no.	入级符号	★ CSA BARGE

DATE 日期	REV 版本	DESCRIPTION 说明	DRAWN 设计	CHECKED 校对	APPROVED 审核
DRAWING NO. 图号		SHIP 船名:			
HS09016-020-002A		90m Flat Top Barge			
SCALE 比例		REV 版本	PAGES 页数	TITLE 图名:	
1:200		0	1/1	General Layout Plan	
OWNER 船东					
BUILDER 船厂					
CLASS 船级社		CCS			
YARD NO 船号		HT09002			
DRAWN 设计		CHECKED 校对	APPROVED 审核	ANHUI JANTLE MARINE ENGINEERING CO., LTD.	
09.06.16	09.06.16	09.06.16			